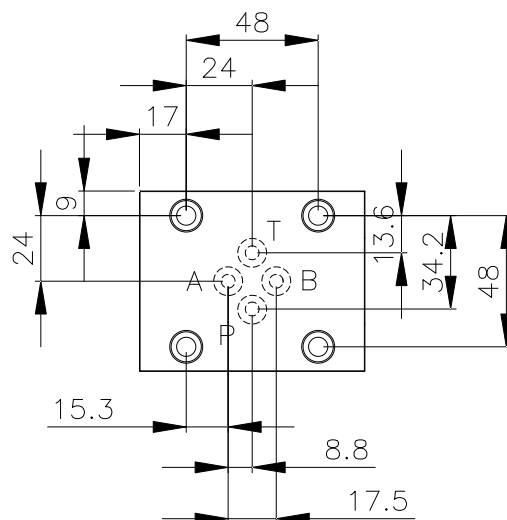


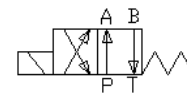
安装面尺寸:



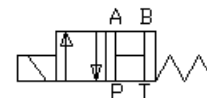
技术数据

- 最大工作压力: 70MPa
Max. operation pressure: 70MPa
- 额定流量: 15L/min
Rated flow: 15L/min
- 拧紧力矩: 5Nm
Tightening torque: 5Nm
- 油液温度: -25~75°C
Fluids temperatures: -25~75°C
- 线圈电压: 直流 24V
Coil voltage: 24V
- 内部泄漏: 最大 4ml/min 在 70MPa 工作压力下
Internal leakage: 4ml/min max. at 70MPa
- 建议使用 $\beta \geq 25 \mu\text{m}$
Filtration: 25 μm nominal or better
- 重量: 3.8kg
Weight: 3.8kg

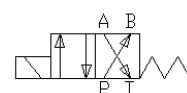
VDR2406I1
(DA091610)



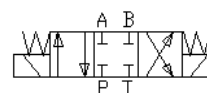
VDR2406I2
(DA091607)



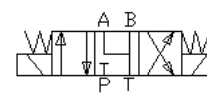
VDR2406I3
(DA091609)



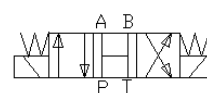
VDR3406O
(DA091531)



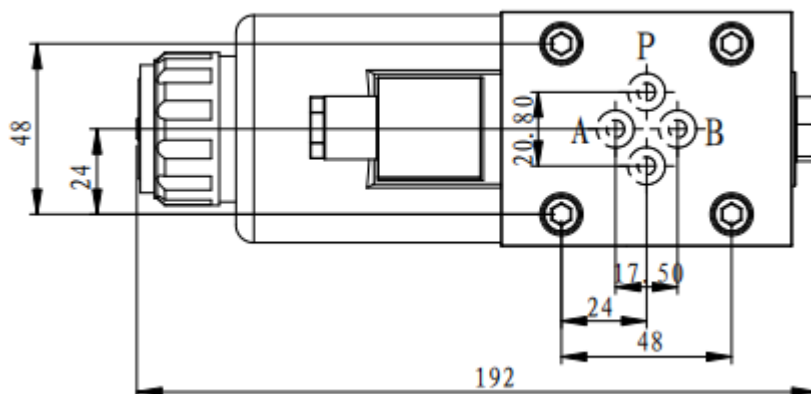
VDR3406Y
(DA091531)



VDR3406H
(DA091531)



VDR2406I1 安装尺寸



VDR2406I2 / VDR2406I3 安装尺寸

