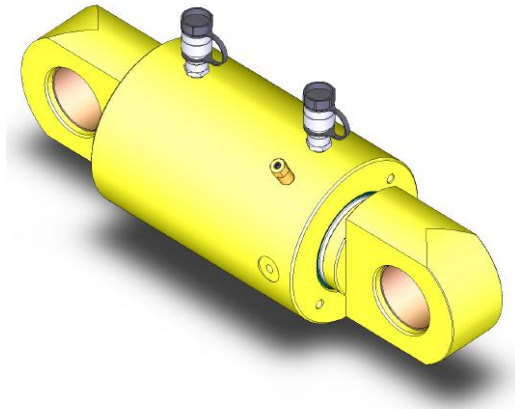
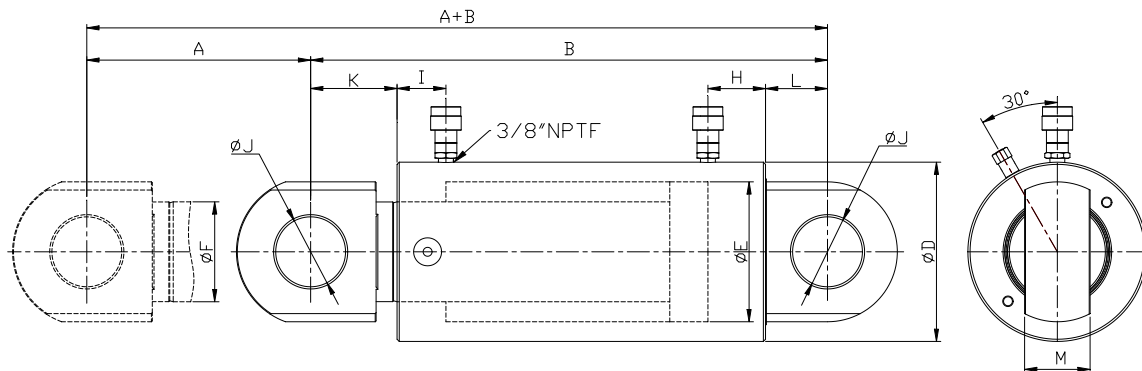


- 双作用设计, 液压回程  
Double acting, hydraulic return
- 拉式设计, 适用于需要张拉合拢的场合  
Designed for pull application
- 两端自带耳环, 便利与受力体相连接  
Integral link on all models for pull application
- 有杆腔设置安全阀有效保护缸体安全  
Built-in safety valve prevents accidental over-pressurization
- 防尘圈设计可减少油缸内部受污染, 延长油缸寿命  
Plunger wiper reduces contamination, extending cylinder life
- 配合C70F04快换母接头和DC04防尘帽  
C70F04 couplers included on cylinder



1. 技术参数 Technical parameters



承载能力 Capacity	有效行程 Stroke	油缸型号 Model Number	最大承载力 Max. Capacity		油缸有效面积 Effective Area 积		液压油容积 Oil Capacity		本体高度 Collap. Height	油缸外径 Outside Diameter	油缸内径 Bore Diameter	油缸杆径 Plunger Diameter	进油口 高度 Base to Adv. Port	回油口到 顶面距离 Top to Return Port	耳环孔径 Link Diameter	耳环到缸 筒距离 Slot to Link End	缸体耳环到 缸体距离 Slot to Link End	耳环厚度 Link Thicknes s	重量 Weight
			顶推 Push	拉伸 Pull	顶推 Push	拉伸 Pull	顶推 Push	拉伸 Pull	B	D	E	F	H	I	J	K	L	M	
			kn	kn	cm <sup>2</sup>	cm <sup>2</sup>	cm <sup>2</sup>	cm <sup>2</sup>	mm	mm	mm	mm	mm	mm	mm	mm	mm	mm	mm
25	50	RPD502	533	264	76.1	37.8	380	189	265	130	98.4	70	52	32	45	54	50	60	21.1
	100	RPD504	533	264	76.1	37.8	761	378	315	130	98.4	70	52	32	45	54	50	60	24.8
	150	RPD506	533	264	76.1	37.8	1141	566	365	130	98.4	70	52	33	45	54	17	60	28.5
	200	RPD508	533	264	76.1	37.8	1522	755	415	130	98.4	70	52	33	45	54	17	60	32.2
	250	RPD5010	533	264	76.1	37.8	1902	944	465	130	98.4	70	52	33	45	54	17	60	35.9
	300	RPD5012	533	264	76.1	37.8	2283	1133	515	130	98.4	70	52	33	45	54	17	60	40.5
45	50	RPD1002	932	433	133.1	61.8	665	309	183	165	130	95	54	48	75	102	80	75	45.2
	100	RPD1004	932	433	133.1	61.8	1331	618	233	165	130	95	54	48	75	102	80	75	51.1
	150	RPD1006	932	433	133.1	61.8	1996	928	283	165	130	95	54	48	75	102	80	75	57.0
	200	RPD1008	932	433	133.1	61.8	2662	1237	333	165	130	95	54	48	75	102	80	75	62.9
	250	RPD10010	932	433	133.1	61.8	3327	1546	570	165	130	95	54	48	75	102	80	75	68.8
	300	RPD10012	932	433	133.1	61.8	3993	1855	433	165	130	95	54	48	75	102	80	75	74.7
70	50	RPD1502	1386	667	197.9	95.3	990	477	200	205	159	114	66	56	80	109	85	80	73.1
	100	RPD1504	1386	667	197.9	95.3	1979	953	250	205	159	114	66	56	80	109	85	80	82.3
	150	RPD1506	1386	667	197.9	95.3	2969	1430	300	205	159	114	66	56	80	109	85	80	91.4
	200	RPD1508	1386	667	197.9	95.3	3959	1906	350	205	159	114	66	56	80	109	85	80	100.6
	250	RPD15010	1386	667	197.9	95.3	4948	2383	400	205	159	114	66	56	80	109	85	80	109.7
	300	RPD15012	1386	667	197.9	95.3	5938	2860	450	205	159	114	66	56	80	109	85	80	118.9
100	50	RPD2502	2563	1064	366.1	152.0	1830	760	275	275	216	165	73	78	90	178	95	90	162
	150	RPD2506	2563	1064	366.1	152.0	5491	2280	375	275	216	165	73	78	90	178	95	90	198
	300	RPD25012	2563	1064	366.1	152.0	10983	4560	525	275	216	165	73	78	90	178	95	90	251